

CERTIFIED LAND CORNER RECORDATION

LOCATION
 33 34
 4 3
 T.14N., R.63W.
 6th P.M.

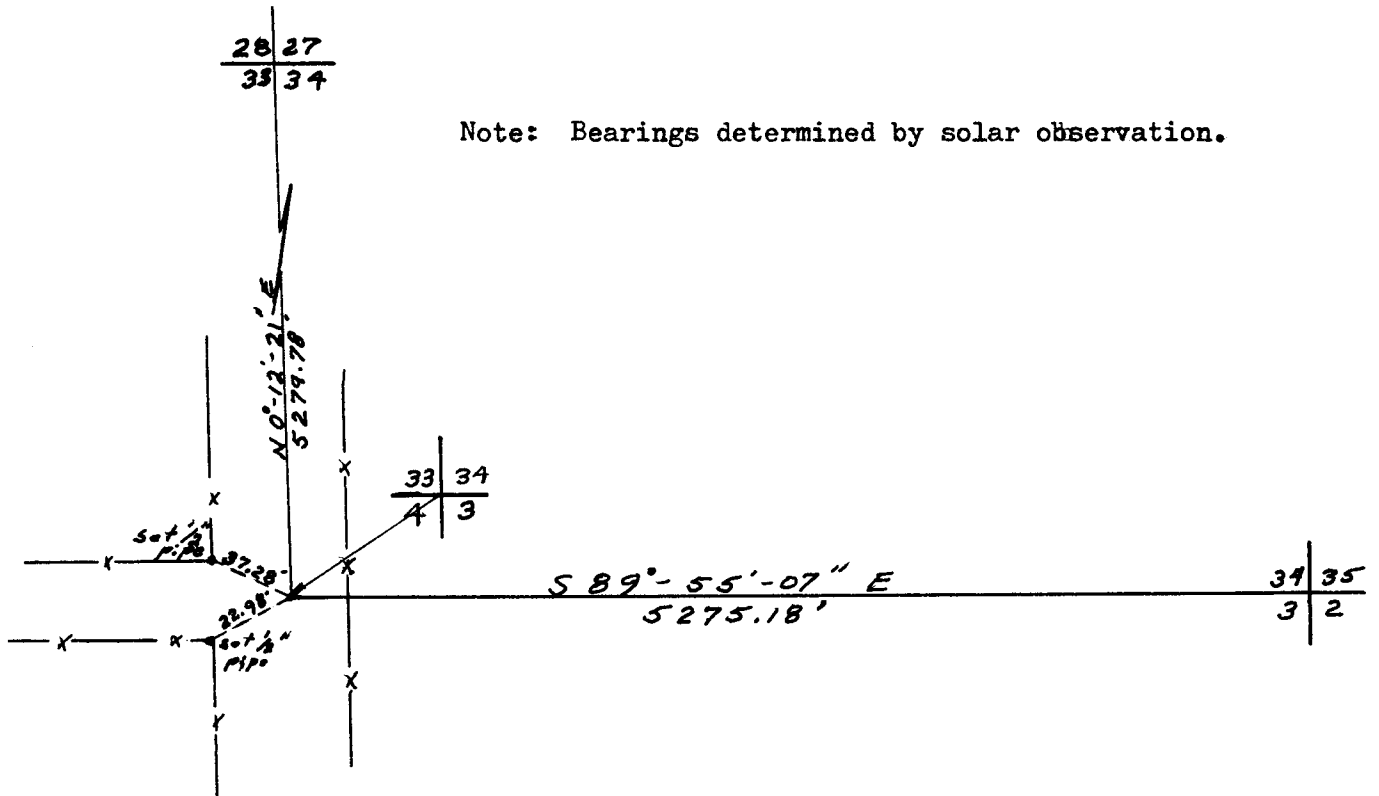
DESCRIPTION OF CORNER EVIDENCE FOUND, AND ORIGINAL RECORD (if known)

No evidence of original corner found.
 Corner re-established by single proportion.
 G.L.O. record - Limestone 30" x 14" x 5".

DESCRIPTION OF MONUMENT AND ACCESSORIES ESTABLISHED TO PERPETUATE THE ORIGINAL LOCATION OF THIS CORNER:

At the corner: Set 5/8" rebar with aluminum cap stamped 33 34
4 3
 Accessories: Set 5/2' steel post 1 ft. east of corner.
 See sketch for witness corners set.

SKETCH, WITH COURSE AND DISTANCE TO ADJACENT CORNER IF DETERMINED IN THIS SURVEY.
 (May Sketch or Paste Reproduction on Reverse Side.)



I, Robert C. Corbet certify that I have carefully performed or reviewed the work done on the diagrammed corner as reported on this recordation form and approve the same.

Robert C. Corbet
 Signature of Surveyor

L. S. No. 495
 Registration No.

STATE OF WYOMING,
 Office of Clerk and Recorder,
 County of Taramie

This "corner record" was filed for record on the 9 day of August, 19 73, was noted on the cross-index plat and is assigned page No. _____, in book No. _____.

John B. Husman
 County Official

Cross Index No. <u>213</u>	T. <u>14</u>	R. <u>63</u>	<u>6</u> Mer.
_____	T. _____	R. _____	Mer.
_____	T. _____	R. _____	Mer.
_____	T. _____	R. _____	Mer.
_____	T. _____	R. _____	Mer.
_____	T. _____	R. _____	Mer.
_____	T. _____	R. _____	Mer.

Photographed ✓
 Indexed *FB*
 Posted ✓
 Assessor ✓

The State of Wyoming }
 County of Laramie }
 This instrument was filed for recording
 at 1/14 o'clock *P. M.* on the
 day of *August*
 A. D. 19*23* and duly recorded in
 Book on page

[Signature]
 County Clerk & Ex-Officio Registrar of Deeds
FB Deputy